

PLAT OF THE RANCHO EL ENCINO

Finally Confirmed to

Vicente de la Ossa et al

Surveyed under the instructions from the

U.S. SURVOR GENL.

by G.H. Thompson Dep Sur.

September 1868

Containing 4460⁷³/₁₀₀ Acres

Scale 40 chs to 1 inch

Variation 1° 15' E

Field Notes Approved:-

Sherman Day

U.S. Surv. Genl. Cal.

San Francisco, Cal. June 30th 1869

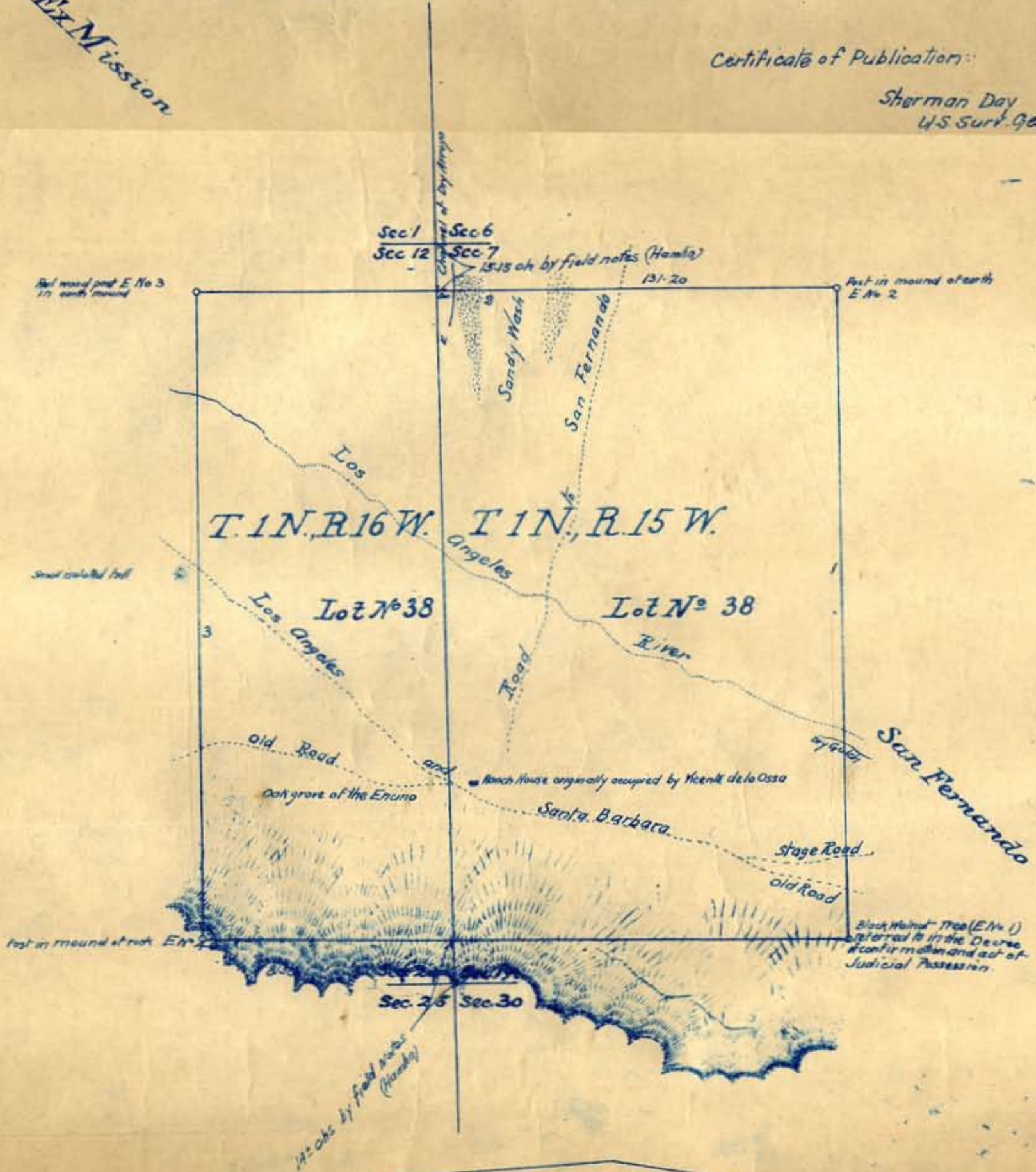
EX Mission

| No | Course | Distance |
|----|--------|----------|
| 1 | North | 210.68 |
| 2 | West | 210.68 |
| 3 | South | 210.68 |
| 4 | East | 212.78 |

Approved Jan. 7. 1873
Willis Drummond
Com. of the General Land Office

Certificate of Publication:-

Sherman Day
U.S. Surv. Genl. Cal.



Recorded Jan. 29th 1873, at 12^o P.M.
at request of Eugene Garnier